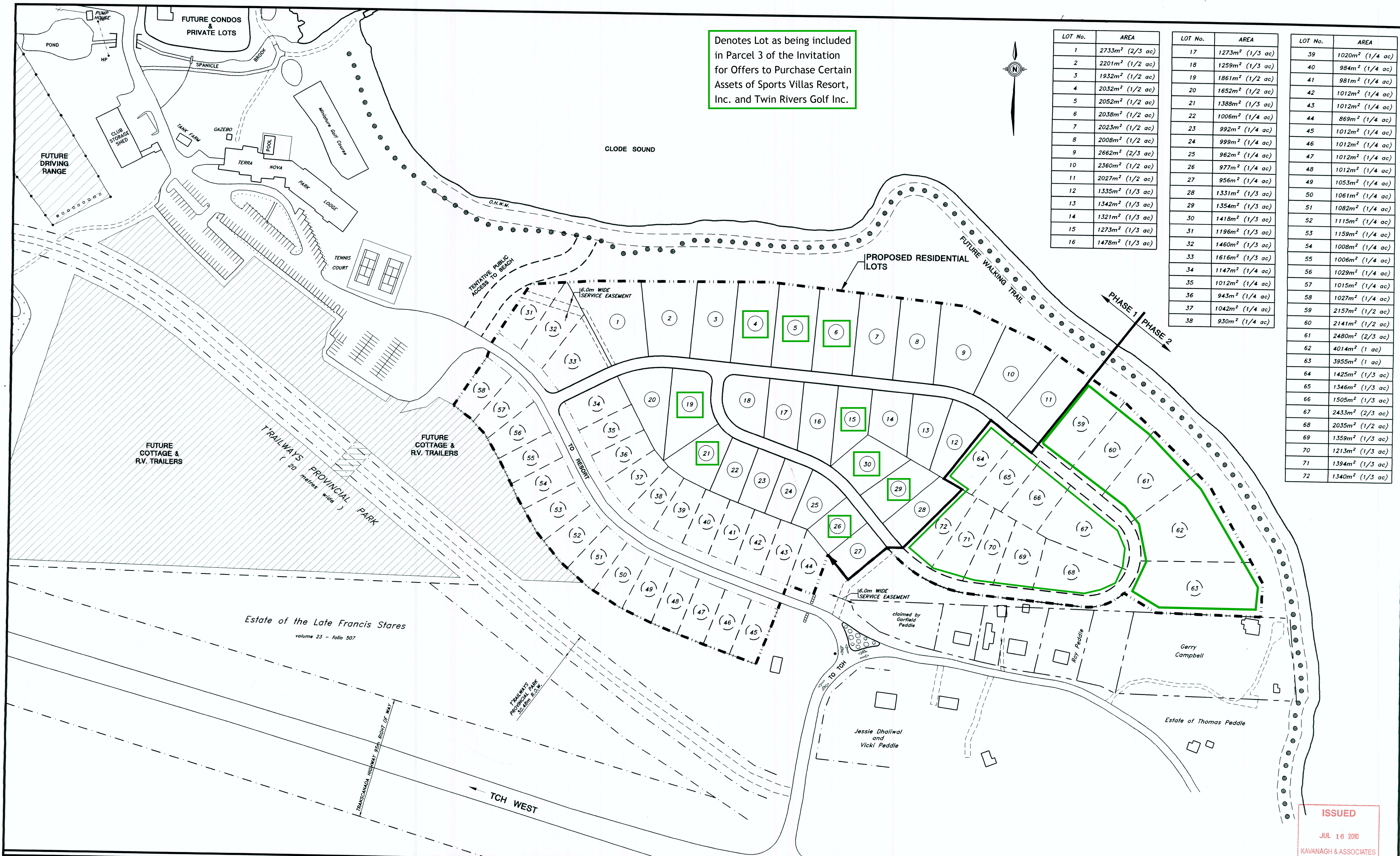


Denotes Lot as being included in Parcel 3 of the Invitation for Offers to Purchase Certain Assets of Sports Villas Resort, Inc. and Twin Rivers Golf Inc.

LOT No.	AREA	LOT No.	AREA	LOT No.	AREA
1	2733m ² (2/3 ac)	17	1273m ² (1/3 ac)	39	1020m ² (1/4 ac)
2	2201m ² (1/2 ac)	18	1259m ² (1/3 ac)	40	984m ² (1/4 ac)
3	1932m ² (1/2 ac)	19	1861m ² (1/2 ac)	41	981m ² (1/4 ac)
4	2032m ² (1/2 ac)	20	1652m ² (1/2 ac)	42	1012m ² (1/4 ac)
5	2052m ² (1/2 ac)	21	1388m ² (1/3 ac)	43	1012m ² (1/4 ac)
6	2038m ² (1/2 ac)	22	1006m ² (1/4 ac)	44	869m ² (1/4 ac)
7	2023m ² (1/2 ac)	23	992m ² (1/4 ac)	45	1012m ² (1/4 ac)
8	2008m ² (1/2 ac)	24	999m ² (1/4 ac)	46	1012m ² (1/4 ac)
9	2662m ² (2/3 ac)	25	962m ² (1/4 ac)	47	1012m ² (1/4 ac)
10	2360m ² (1/2 ac)	26	977m ² (1/4 ac)	48	1012m ² (1/4 ac)
11	2027m ² (1/2 ac)	27	956m ² (1/4 ac)	49	1053m ² (1/4 ac)
12	1335m ² (1/3 ac)	28	1331m ² (1/3 ac)	50	1061m ² (1/4 ac)
13	1342m ² (1/3 ac)	29	1354m ² (1/3 ac)	51	1082m ² (1/4 ac)
14	1321m ² (1/3 ac)	30	1418m ² (1/3 ac)	52	1115m ² (1/4 ac)
15	1273m ² (1/3 ac)	31	1196m ² (1/3 ac)	53	1159m ² (1/4 ac)
16	1478m ² (1/3 ac)	32	1460m ² (1/3 ac)	54	1008m ² (1/4 ac)
		33	1616m ² (1/3 ac)	55	1006m ² (1/4 ac)
		34	1147m ² (1/4 ac)	56	1029m ² (1/4 ac)
		35	1012m ² (1/4 ac)	57	1015m ² (1/4 ac)
		36	943m ² (1/4 ac)	58	1027m ² (1/4 ac)
		37	1042m ² (1/4 ac)	59	2157m ² (1/2 ac)
		38	930m ² (1/4 ac)	60	2141m ² (1/2 ac)
				61	2480m ² (2/3 ac)
				62	4014m ² (1 ac)
				63	3955m ² (1 ac)
				64	1425m ² (1/3 ac)
				65	1346m ² (1/3 ac)
				66	1505m ² (1/3 ac)
				67	2433m ² (2/3 ac)
				68	2035m ² (1/2 ac)
				69	1359m ² (1/3 ac)
				70	1213m ² (1/3 ac)
				71	1394m ² (1/3 ac)
				72	1340m ² (1/3 ac)

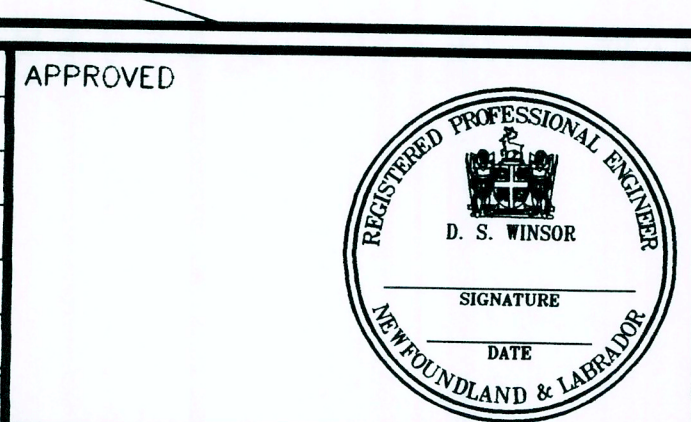


ISSUED
JUL 16 2010
KAVANAGH & ASSOCIATES LIMITED

Notes:

NO.	REVISION	DATE	INITIAL

APPROVED			



PROVINCE OF NEWFOUNDLAND
PERMIT HOLDER
Class "A"
This Permit Allows
KAVANAGH & ASSOCIATES LIMITED
To practice Professional Engineering
in Newfoundland and Labrador.
Permit No. as issued by APEGN T0013
which is valid for the year 2003.

NORTH WEST ARM DEVELOPMENT INC.
SPORTS VILLAS RESIDENTIAL DEVELOPMENT
PORT BLANDFORD, NEWFOUNDLAND
LOT LAYOUT & LOT AREAS

Kavanagh & Associates Limited
Consulting Engineers & Project Managers
St. John's, Nfld.

Scale: 1 : 1250
Drawn by SCF
Ckd. by DSW
Date: OCTOBER, 2002
Dwg. No. A1 - 0339 - G4
Rev. 0

FUDGE - FA2003-0339-1 ISSUED DRAWINGS - November 12 2003/A1-0339-G4.dwg - Thu, 8 Jun 2004 - 11:18 AM